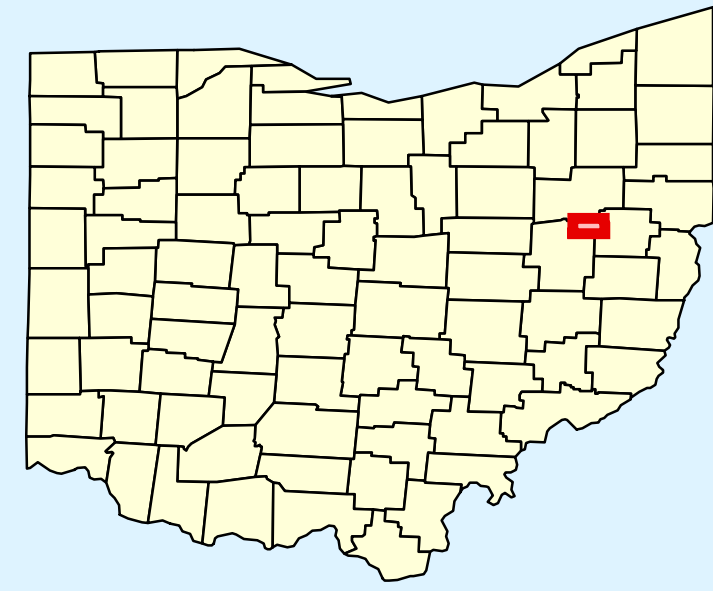
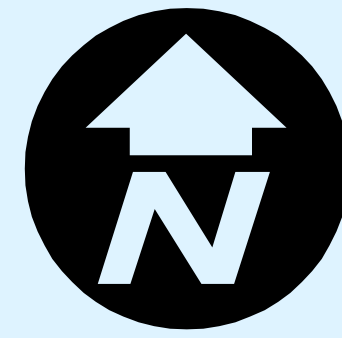


HUFF RUN WATERSHED



Contact Information

Tuscarawas Soil and Water Conservation District

Telephone
330-339-7976

FAX
330-339-1559

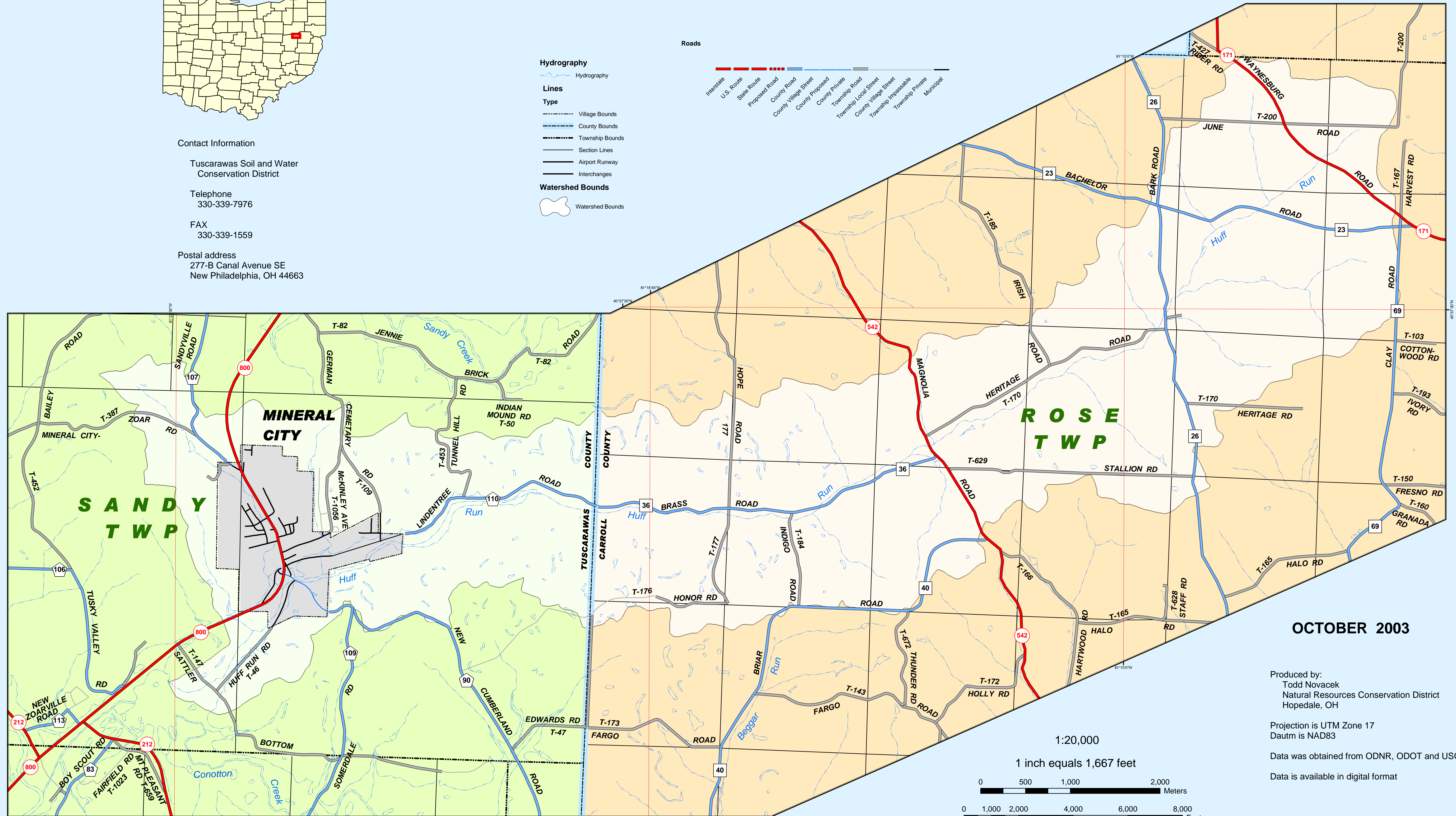
Postal address
277-B Canal Avenue SE
New Philadelphia, OH 44663

Hydrography

- Hydrography
- Lines**
- Village Bounds
- County Bounds
- Township Bounds
- Section Lines
- Airport Runway
- Interchanges
- Watershed Bounds**
- Watershed Bounds

Roads

- Interstate
- U.S. Route
- State Route
- Proposed Road
- County Road
- Village Street
- County Proposed
- County Private
- Township Road
- Township Local Street
- County Village Street
- Township Impassable
- Township Private
- Municipal



OCTOBER 2003

Produced by:
Todd Novacek
Natural Resources Conservation District
Hopedale, OH

Projection is UTM Zone 17
Datum is NAD83

Data was obtained from ODNR, ODOT and USGS

Data is available in digital format

1:20,000

1 inch equals 1,667 feet

